

Rockfon MetalScapes™ Wire Mesh Panels

Primary Applications:

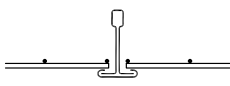
Create durable, accessible, and airy ceilings in interior spaces.

Features and Benefits:

- ROCKFON MetalScapes Wire Mesh panels are constructed of stainless or carbon steel
- 8 stainless steel panels— no painting
- 6 carbon steel panels— paintable
- Stainless steel and carbon steel panels are available in 24" x 24" or 24" x 48" nominal configuration for use in 15/16" grid

- Factory applied, no-VOC powder coated paints for carbon steel panels only
- ROCKFON MetalScapes wire mesh panels may contribute to LEED® Certification project credits
- Class A Fire Rating (Non-combustible material)
- From 10% to 25% recycled content; 100% recyclable at end of useful life

PRODUCTS

| | | | | | |
|---|---|--|--|--|--|
|  | Material <input type="checkbox"/> Stainless steel <input type="checkbox"/> Carbon steel | Profile | | | |
| | Panels Finishes: <input type="checkbox"/> Stainless steel <input type="checkbox"/> Standard Painted Colors (carbon steel panels only) <input type="checkbox"/> Premium Painted Colors (carbon steel panels only) Size: <input type="checkbox"/> 24" x 24" <input type="checkbox"/> 24" x 48" Suspension System: <input type="checkbox"/> 15/16" grid | Stainless steel 24" x 24" <input type="checkbox"/> Appalachian 60015.0 <input type="checkbox"/> Alps 60016.00 <input type="checkbox"/> Everest 60017.00 <input type="checkbox"/> Rockies 60018.00 <input type="checkbox"/> Hood 60019.00 <input type="checkbox"/> Atlas 60020.00 <input type="checkbox"/> Ural 60021.00 <input type="checkbox"/> Tyber 60022.00 | Stainless steel 24" x 48" <input type="checkbox"/> Appalachian 60035.0 <input type="checkbox"/> Alps 60036.00 <input type="checkbox"/> Everest 60037.00 <input type="checkbox"/> Rockies 60038.00 <input type="checkbox"/> Hood 60039.00 <input type="checkbox"/> Atlas 60040.00 <input type="checkbox"/> Ural 60041.00 <input type="checkbox"/> Tyber 60042.00 | Carbon steel 24" x 24" <input type="checkbox"/> Aberdeen 60023.XX <input type="checkbox"/> Erlanger 60025.XX <input type="checkbox"/> Frankfort 60027.XX <input type="checkbox"/> Scales 60029.XX <input type="checkbox"/> Armor 60031.XX <input type="checkbox"/> Lattice 60033.XX | Carbon steel 24" x 48" <input type="checkbox"/> Aberdeen 60024.XX <input type="checkbox"/> Erlanger 60026.XX <input type="checkbox"/> Frankfort 60028.XX <input type="checkbox"/> Scales 60030.XX <input type="checkbox"/> Armor 60032.XX <input type="checkbox"/> Lattice 60034.XX |

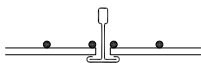
Rockfon MetalScapes™ Wire Mesh Panels

PHYSICAL DATA

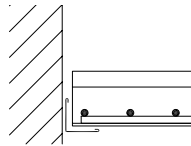
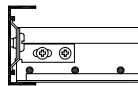
- Type:** Lay-in panels
Material: Stainless steel, non-paintable
 Carbon steel, painted
Size: 24" x 24" and 24" x 48" (nominal dimensions)
Fire: Class A: flame 0, smoke 0 per ASTM E 84
Performance: Interior applications
Suspension: 15/16" grid; 15/16: CubeGrid
Warranty: 1 year limited
Sustainability: 10-25% recycled content; 100% recyclable at end of useful life

SECTIONS

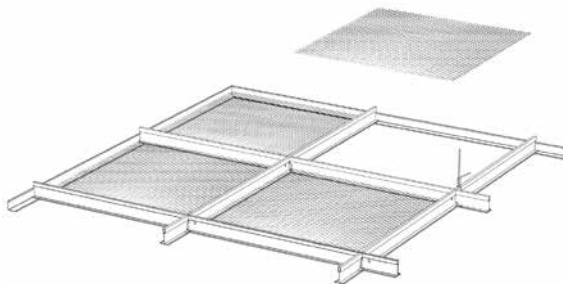
Panel at Grid



Panel at Wall

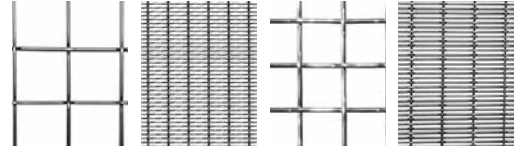
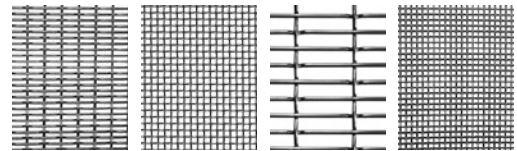
Panel at
Infinity Perimeter Trim

Ceiling Plan Example

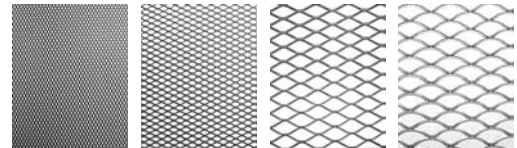
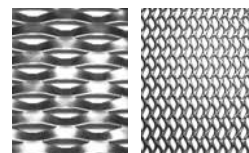


PERFORATION PATTERNS

Stainless Steel

Appalachian
60015Alps
60016Everest
60017Rockies
60018Hood
60019Atlas
60020Ural
60021Tyber
60022

Carbon Steel

Aberdeen
60023Erlanger
60025Frankfort
60027Scales
60029Armor
60031Lattice
60033